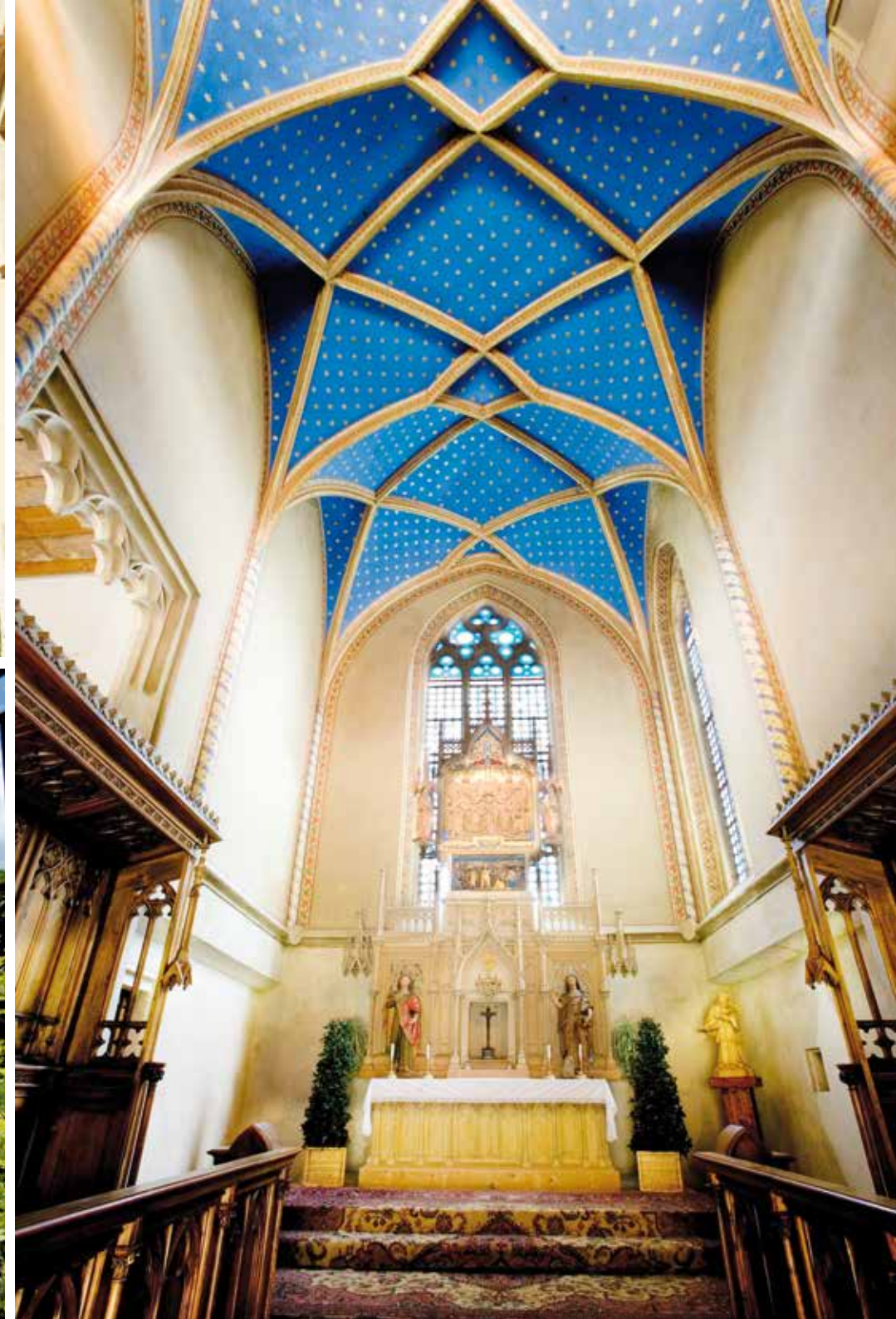


A close-up photograph of a hand holding a bouquet of flowers. The hand, with light pink manicured nails and a diamond ring on the ring finger, is positioned on the left side of the frame. The bouquet is composed of several large, light pink and white roses, interspersed with smaller, delicate pink flowers and green foliage. The background is softly blurred, showing more of the bouquet and the hand holding it.

Renaissanceschloss Rosenberg

For *YOUR*
special day



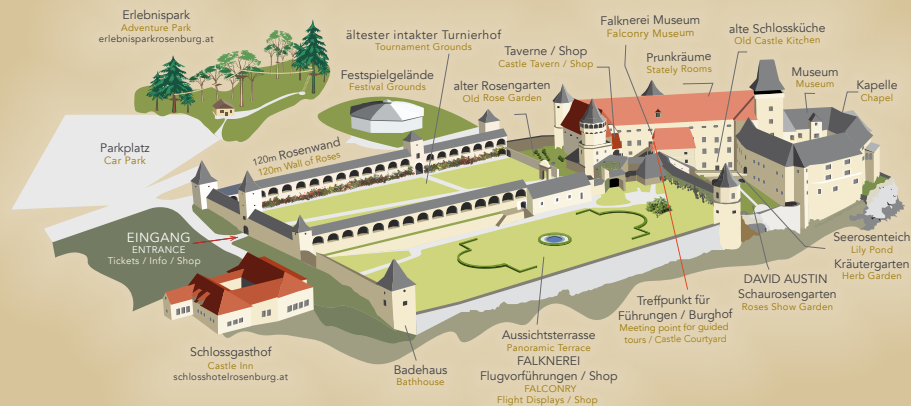


Gives your idea the right setting

The various state rooms and different areas are available for staging impressive events. They impress with their genuine beauty, classic elegance, and stylish ambience.

The offer includes the historic Marble Hall, the dignified library with ornate paneling, the representative meeting room, and the stately vaulted hall.

The magnificent gardens of the grounds, with the historic tournament courtyard, rose gardens, and viewing terrace, can also be included in the planning of your event. Another special feature is the 15th-century Gothic chapel, which provides the perfect setting for an atmospheric church wedding.



We offer you:

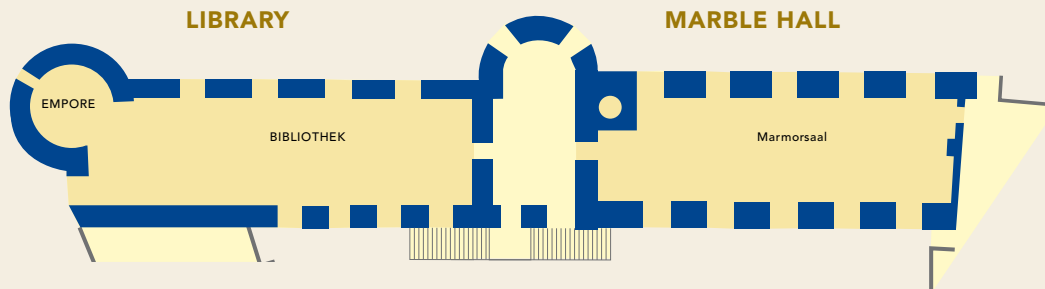
- A tasteful ambience with a selection of differently furnished rooms
- The option of using either the castle grounds or the castle courtyards
- Attractive programmes can be booked (guided castle tours, falconry demonstrations, Adventure Park, children's program)
- Supervision during your celebration
- Option of civil or church weddings

We are happy to help you find the perfect support for:

- Catering
- Flower arrangements and decoration
- Shuttle and chauffeur services
- Security service
- Overnight accommodation







Information Marble Hall

Capacity:
banquet 200 PAX
row seating 250 PAX
reception 300 PAX

Area: 172 m²

Lighting:
daylight
indirect lighting
fireplace

Information Library

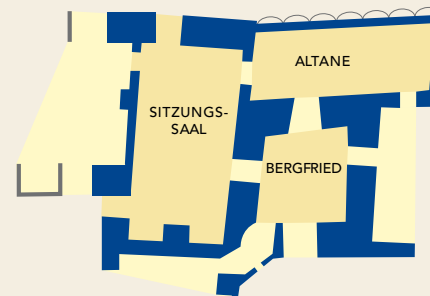
Capacity:
banquet 200 PAX
row seating 250 PAX
reception 300 PAX

Area: 186 m²

Lighting:
daylight
indirect lighting



ASSEMBLY HALL | BERGFRIED | BALCONY



Assembly Hall

Capacity:
banquet 40 PAX | row seating 40 PAX | reception 50 PAX

Area: 69 m²

Lighting: daylight | indirect lighting | fireplace

Information Bergfried

Capacity: Banquet 20 PAX

Area: 33m²

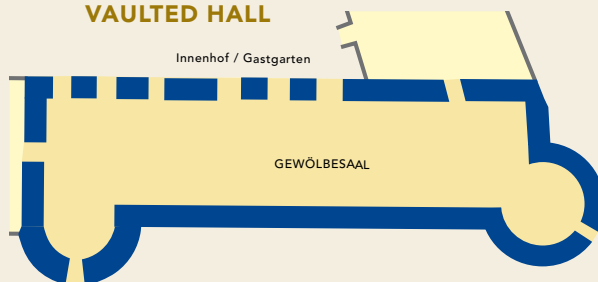
Lightning: daylight | indirect

Balcony

Capacity:
banquet 40 PAX / reception 70 PAX

Area: 50 m²

VAULTED HALL



Vaulted Hall

Capacity:
banquet 250 PAX
seated 300 PAX
reception 450 PAX

Area: 260 m²

Lighting:
daylight
conventional lighting



Rental of location and equipment

1. Stately rooms / Locations

Library	from € 2.600,-
Marble Hall	from € 2.600,-
Assembly Hall	from € 1.800,-
Vaulted Hall (Incl. suitable seat options for up to 120 people)	from € 1.800,-
Gallery (per hour or by agreement)	from € 650,-
Castle Kitchen & Wine Cellar (per hour or by agreement)	from € 350,-
Rose Garden I or II (per hour or by agreement)	from € 550,-
Chapel (per hour or by agreement)	from € 550,-
Panorama Terrace (per hour or by agreement)	from € 750,-
Tower room (per hour or by agreement)	from € 550,-
Castleyard (per hour or by agreement)	from € 650,-
Theatre tent	Price on request

Special Offer:

- | | |
|----------------------------------------------------------------------------------------------------------|-------------------|
| 1. Marble Hall, Gallery, Assembly Hall, Donjon*
(closed to visitors during the rental period) | € 3.900,- overall |
| 2. Library Marble Hall, Gallery, Assembly Hall, Donjon*
(closed to visitors during the rental period) | € 4.900,- overall |
| 3. Rosenberg Exclusive: April – October | on request |
| 4. Rosenberg Exclusive: Nov – March and on closing days | on request |

Renting of other rooms or spaces on request.

Important:

The above-mentioned rates are **exclusive VAT**. The rates include the use of the room up to max. 20 hours for that day (including Assembly- and disassembly, decorate, e.t.c.) . The rate includes: normal cleaning (special cleaning has to be organized by the renter or will be charged) and normal electricity usage. The rate does not include any form of furniture, personnel, electrical connections or other equipment such as technical equipment. On request, we will be glad to provide you with a personal offer.

***on Saturdays from May till September, one can only rent the special offer.**



Rental of location and equipment

2. Equipment & Service packages

Up to 70 people: without white covers	€ 15,90 per person
with white covers	€ 19,90 per person

Up to 71 people: without white covers	€ 13,50 per person
with white covers	€ 17,50 per person

Following Equipment & Service is included:

- round tables of 10 incl. molleton on request
- elegant banquet chairs
- assembly and disassembly
- normal cleaning after the event (NO SPECIAL CLEANING in the case of stains e.g. candles, fat etc. on the ground)
- wood for fireplace
- regular power consumption
- Security officer until midnight, after which €95 per hour or part thereof
- Restroom supervision until 8 p.m., after which €75 per hour or part thereof

This equipment is set up and dismantled one day before and one day after the rental day.

Important:
The above-mentioned rates exclusive VAT and rates based per day.
Should something be damaged or need a special cleaning, this will be charged separately



Rental of location and equipment

3. Services

Assembly helpers

If you need help in assembling up or disassembling or for all assembling and disassembling work outside of the above-mentioned packages, we can provide assembly helpers. Depending on the desired scope of assembling and disassembling work, the personnel deployment will be charged EUR 65.- per person per hour. You will receive an exact estimate if you tell us your requirements and wishes

Security personnel

Included until midnight. After that (until the last person has left the castle premises: caterer, DJ, etc.): €95.- net per started hour.

Restroom attendant

Included until 8:00 PM. After that: €75 net per started hour

Electricity supply

Higher power consumption (heavy current)	on request
Production of a electricity connection	€ 72,-
Cable rental	€ 48,-

Heating costs

Heater	€ 12,- per hour
Heating cannon	€ 21,- per hour

Illumination with cup candles

Illumination takes place from dawn until the end of the event.

Courtyard	€ 290,-
Courtyard & tournament courtyard	€ 490,-
Courtyard, rose garden, water lily garden, David-Austin-Garden, bridge and tournament courtyard	€ 790,-

Special guided tours

Guided tours of the museum rooms on closing days or after regular opening hours € 240,- overall
(up to a maximum of 40 people – from the 41st person + € 6,- per person)

Guided tours by appointment are also possible in English or Czech.

.

Exclusive historic birds of prey free flight demonstration

(UNESCO World Heritage Site)	
Historical bird of prey demonstration	€ 900,-
Historical falconry demonstration on horseback	€ 1.200,-

Important:
The above-mentioned rates exclusive VAT and rates based per day.
Should something be damaged or need a special cleaning, this will be charged separately

Contacts

**REGISTRAR:**

Michaela Hiess: +43 (0)2982/2656270, hiess@horn.gv.at

CHATOLIC PRIEST:

Stift Altenburg oder Wallfahrtskirche Maria Dreieichen

Pater Michael Hüttel: +43 (0)664/80114442, p.michael@stift-altenburg.at

Pfarre Horn, Pater Albert Groiss: +43 (0)664/80114444, p.albert@stift-altenburg.at

DECORATION / FLOWER ARRANGEMENTS:

Viktoria Wallner, +43 (0)664/1050406, office@viktorias-wallner.com

Gärtnerei Band, Frau Judit Band: +43 (0)664/2044229, www.band-garten.at

Gartenbau Eder, Frau Eder: +43 (0)664/2160646, www.gartenbau-eder.com

LIGHT & SOUND EQUIPMENT:

Event Express, Erwin Perchtold: +43 (0)664/2816575, www.eventxpress.at

WHAT Event, Thomas Wanitschek, +43 (0)664 5702966, office@what-event.at

TENT RENTAL:

Wallner Zelte, Mag. Friedrich Wallner, +43 664 34 44 283, www.wallner-zelte.at

PHOTOGRAPHER:

Foto Andraschek, Frau Alrun Andraschek: +43 (0)2982/2239, www.foto-andraschek.at

Fotografie Melanie Köberl: +43 (0)664/4104827, www.melaniekoeberl.at

HISTORICAL FALCONRY:

Vladimir Garaj: +43 (0)664/8741849, falknerei@rosenburg.at

PYROTECHNICS:

Thomas Nichtawitz Feuerwerk: +43 (0)664/344 6575, thomas.nichtawitz@gars.at

CATERING:

Schlossgasthof Rosenburg: +43 (0)676 7777 118, www.schlossgasthofrosenburg.at

Ysi's Kulinarik: +43 (0)676/9760050, www.ysis-kulinarik.at

Motto Catering: +43 (1)585/2303, www.motto-catering.at

Harry's Catering: +43 (0)664/8499037, office@harrys.co.at

ACCOMMODATION:

Schloss Horn: +43 (0)664 889 863 20, hoyos@rosenburg.at, www.schlosshorn.com

Gasthof Blie: +43 (0)2982/2257, www.hotelblie.at/

Landgasthof Mann: +43 (0)2982/2915, www.hotelmann.at

Campus Horn: +43 (0)2982/50325, www.campus-horn.at

Gasthof Nußbaum: +43 (0)2985/2120, www.nussbaum-etzmanssdorf.at

Smart Motel Gars: +43 (0)664/80665454, www.smartmotel.at

SECURITY SERVICE:

Schneider Facility Group: +43 (0)190 42059, www.facilitygroup.at/

TAXI COMPANY:

Taxi Fox, Details unter: www.fahrtendienst-kierberger.at/kontakt/

Langthaler Transport, +43 (0)2982/2269, www.langthaler-transport.com

Taxi Mann, +43 (0)2982/2611, www.waldviertel.at/infrastruktur/a-taxi-mann

Castle Inn Rosenberg



EAT. DRINK. ENJOY.

Experience unforgettable moments with us. Let yourself be enchanted and immerse yourself in the world of pleasure. Not only the cuisine and the cozy atmosphere, but also our warm welcome will thrill you. You come as a guest and leave as a friend.

Culinary Art

We offer organic regional dishes in a cozy atmosphere for the physical well-being. Seasonal gourmet and speciality weeks, as well as brunch on selected Sundays ensure culinary variety. Romantic candlelight dinners and overnight packages for lovers can be booked in advance at any time.

Catering

The Schlossgasthof Rosenberg offers a regionally rooted catering concept that places particular emphasis on high quality and the transparent origin of the ingredients used, complemented by seasonally coordinated menus and exclusive gourmet options available upon advance order.

Overnight stays

Beautiful luxury rooms and suites, some with free-standing bathtub, are available for our discerning guests.



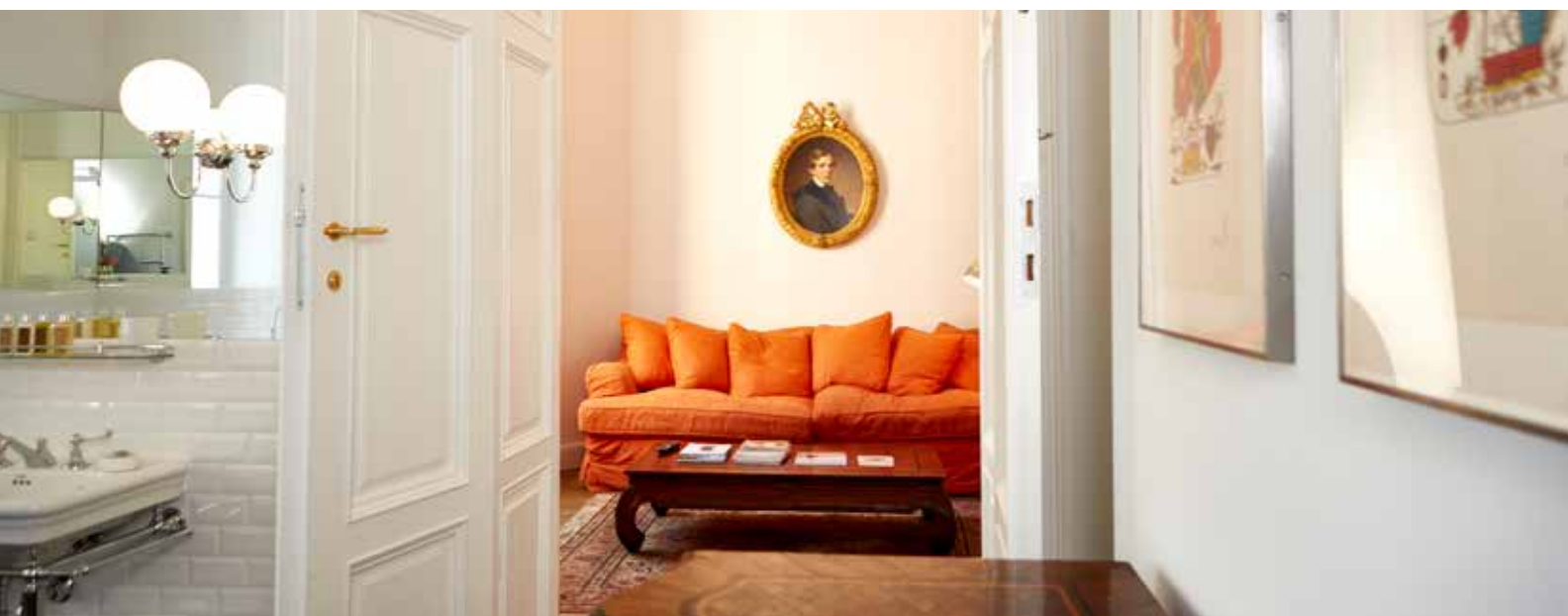
**For detailed information concerning
your inquiry please contact**
Tel.: +43 (0)676 777 71 18
schlossgasthof@rosenburg.at
schlossgasthofrosenburg.at



SCHLOSS HORN



Exclusive overnight stays



Castle Horn

A WALDVIERTLER LOCATION OF THE SPECIAL KIND

Nestled in the wild and romantic landscape of the Waldviertel, surrounded by a beautiful park, located in the center of the city of Horn is the residence of family Count Hoyos.

Each suite has box spring beds and a private bathroom with a bathtub and a shower. The wing also includes a kitchen and living area. The use of the castle park including the tennis court is at your own risk.

More rooms

More rooms and suits are available on request.

Chapel

For small, exclusive weddings, baptisms, etc., it is also possible to rent one of the two castle chapels.



**For detailed information concerning
your inquiry please contact**

Tel.: +43 (0)664 889 863 20

hoyos@rosenburg.at

www.schlosshorn.com

**SENSE HISTORY –
EXPERIENCE TRADITION**

**For detailed information concerning
your inquiry please contact**

Tel.: +43 (0)664 404 68 76,
E-Mail: marketing@rosenburg.at

  **[rosenburg.at](https://www.rosenburg.at)**